



February 2020

There's lots going on in the Solihull Parish for families. Everyone is welcome!

Sunday Worship

St Alphege Church (B91 3RQ)

You are welcome at the **9:15am** in the church building. Worship with a mix of traditional and contemporary music in our beautiful church. Space for all ages with dedicated activities for children.

"The Junction" meets at **9.15am** in the Oliver Bird Hall (OBH) – adjacent to the church building. An informal service for young families offering tailored activities for children of all ages, from babies to big kids. It's lively and laid back!

At 9.15am on Sunday 9th February we will all worship together in the church building. We'll be talking about salt and light!

You are welcome at the **11am**. A choral service with our excellent choirs. Time to reflect and wonder.

We have Choral Evensong at **6.30pm** - a traditional contemplative service enjoyed by Christians and people of no faith (there is also a short Choral Evensong service on Wednesdays at 6.30pm which can give a peaceful half hour break in the middle of the week)

St Helen's Church (B91 2DA)

You are welcome to St Helen's at **10am** on the 1st, 2nd, 4th and 5th Sundays. Worship in a modern space with a strong community feel and a range of traditional and contemporary music. Tailored groups for children.

Jigsaw meets at 4pm on the 3rd Sunday of each month – for more details see below.

St Michael's Church (B91 1BS)

You are welcome to come along to St Michael's at **10.30am** every Sunday at Sharman's Cross Junior School (B91 1PH). We meet in the school hall where we create a warm, welcoming space for all ages to worship, with a creche for little ones and activities for children of all ages.

Weekly Activities

Prams to Preschool - Praise and Play: Every *Friday* from 9.30am onwards in the Oliver Bird Hall.

Fun and fellowship for all. Come along and chat, eat biscuits, sing action songs and explore a bible story.

St. Alphege Choirs: We are fortunate to have choirs for boys and girls from Year 3 upwards. They rehearse weekly and sing at Sunday morning services and Choral Evensong. Visit www.stalphegemusic.org.uk to find out more.

Parish Youth: There are lots of exciting things going on in the Parish for young people from Year 6 upwards run by the **Parish Youth** team.
Wednesdays (alternate weeks) 6.30pm-7.30pm or 7.30pm-8.30pm
Fridays 6pm-7.30pm

If you are interested, please contact Joe on j.minall@solihullparish.org.uk

Women's Theology groups: All women are welcome to join us in discussing the Bible and how it applies to our daily lives. We meet twice each month with three different groups (Thursday 1pm, Thursday 7.30pm, Friday 10am) to choose from. For more information and to sign up, please contact Charlotte Gibson: chachagibson@gmail.com 0121 709 0668.

Other Activities in February & beyond



800 Acts of Kindness – In 2020 we are celebrating 800 years of Christianity in Solihull and we are aiming to record more than 800 Acts of kindness carried out in Solihull during 2020. Everyone can get involved - Groups, individuals, Churches, schools, the whole community! All you need to do is decide on an Act of kindness and then complete it! It can be something big or small, one off or ongoing. If you're stuck for ideas, then contact 800actsofkindness@solihullparish.org.uk for suggestions. Look out in church for cards to record any Acts of kindness you or someone in your family has completed or an act of kindness that you have experienced or you can send the information in an e mail to

800actsofkindness@solihullparish.org.uk

The 800 Acts of Kindness Facebook page is now live! www.facebook.com/800actsofkindness

Please like and share it!

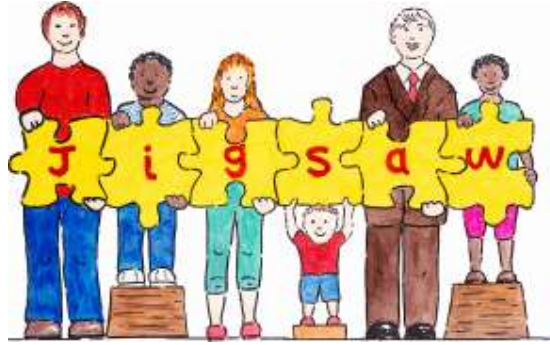
Messy Church - February 14th - It's Valentine's Day so of course we'll be thinking about Love! 4-6pm at St. Helen's Church, St. Helen's Road (off Buryfield Road) B91 2DA. Suitable for families of all ages with lots of creative activities and a hot child-friendly meal to finish. £2 per person, £7 per family. Send an email to Linda Hicks l.hicks@solihullparish.org.uk if you can make it so we can make sure we have enough food!

And make a note in your diary that it will also be Messy Church on 13 March, 15 May, 12 June and 10 July.

First Communion preparation – For children in Yr 3 upwards - This year the First Communion welcome service is on Sunday 1 March. There will be 6 preparation sessions 4.00-5.00pm on Sunday afternoons 1, 8, 15, and 29 March, 26 April and 3 May. First communion Sunday will be Sunday 10 May.

For further information or to register contact Linda Hicks l.hicks@solihullparish.org.uk

Jigsaw: Sunday 16th February 4 -5pm St Helen's Church - A time to get together with others to explore a Bible story in lots of different ways, to sing and pray to God and to have tea together. It's for everyone and we hope it will be for you!



UNDERSTANDING YOUR CHILD

A Solihull Approach group for Parents and Carers

Would you like to know more about your child's development?

Would you like a better understanding of your child's behaviour?

Do you know why your child has temper tantrums?

The group is run jointly by St Alphege school and Yew Tree school in association with Solihull Parish and will be based on an approach developed in Solihull that has been helpful to parents and has shown that children's behaviour tends to improve.

We will explore issues like having fun together, communication, development needs, parenting styles, behaviour difficulties, sleep.

The group will start on Thursday 27th February 2020 and will run for 6 weeks and will finish on Thursday 2nd April 2020. The sessions will start at 6:30pm and aim to finish at 8:30pm and will be at Tudor Grange Primary Academy Yew Tree, Wherretts Well Lane, Solihull B91 2SD

The group is completely free of charge and places will be filled on a first come first served basis.

If you are interested in joining the group, contact Linda Hicks l.hicks@solihullparish.org.uk

Pancake Party: Saturday 22nd February in the Oliver Bird Hall 5.00pm-7.00pm Team races and special races for tiny tots, Children's tombola, pancakes to eat, bar including soft drinks, cakes and jam for sale. A great family event for everyone!

Adults £3 Children £1 Pay on the night

St. Alphege Pre-school Groups (held in the Oliver Bird Hall)

Little Treasures: *Wednesdays* in term time 1pm – 2.30pm.

Drop-in 'play and stay' session for children aged 0 – 4. Early Help resources around children's milestones and development are on display and available to take home.

£4.50 per family includes refreshments.

Little Movers: *Mondays* in term time 9.30am – 11am. Activities to offer children the opportunity to further develop social, language and physical skills in the academic year they will turn two years old. Drop-in 'play and stay' session – no need to book. £4.50 per child (£1 additional siblings, maximum charge £6.00 per family) includes refreshments.

St. Alphege Pre-school: Ofsted 'Outstanding' for second consecutive inspection. Early years education for children in the academic year they will turn three years old. Monday to Friday term time 9.10am – 12.10pm. Applications on website <http://www.stalphege-preschool.org.uk/> or email request to manager@stalphege-preschool.org.uk



The youngest section in Scouts and open to both Boys and Girls aged 6 – 8. We take part in lots of activities which helps us make new friends, learn new skills, explore our world, play games but most of all have fun! Beavers meet on a Monday or Wednesday evening.

To find out how to get your child onto the waiting list please email:-
waitinglist@6thSolihullScouts.org.uk Or to find out more information call
Patrick Taylor (Group Scout Leader) 07711 062127

Family Information Form

The Parish are checking details of families who attend church services and activities in the Parish to ensure we have the correct information. Many families have now completed forms but if you haven't yet, please ask for one from the leader of the children's activity you attend or at the Parish Office.

Safeguarding

The Parish take safeguarding of everybody seriously but in particular children and vulnerable adults. We are all vulnerable adults at some time in our lives. It is everybody's responsibility so if you have a concern or allegation, including those in the past, regarding safeguarding in the church please raise it.

You can contact Viv Dobson, the Parish Safeguarding Co-ordinator, on 07960 783636 or a member of the clergy.

Contact details are on noticeboards in each church as is a copy of the safeguarding policy. Information is also available on the website www.solihullparish.org.uk.

